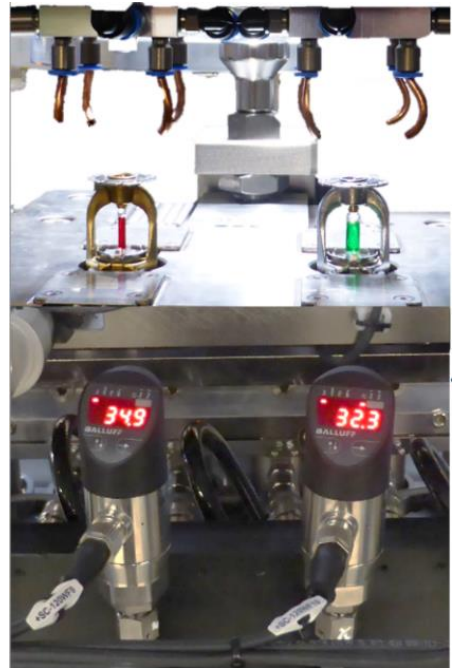


Tightness test with water pressure



- Test unit for the tightness of sprinklers under certain pressure conditions
- Test method: Applying water pressure to the sprinkler
Observation of the pressure drop during the test period
- 100% test
- Hydraulic circuit for distilled water with recovery
- Rotary indexing table
Simultaneous testing of 6 test pieces
Exchangeable cassettes for different types of test pieces
- Subsequent drying of the test pieces with air jet
- Safety concept in case of glass bulb bursts



Technical Data

Test piece	Sprinkler head for fire sprinkler system
Diameter test specimen	10...25 mm
Height test specimen	15...30 mm
Connection	different shapes of geometry

Test medium	Distilled water
--------------------	-----------------

Measurement data	Pressure drop during the test period
-------------------------	--------------------------------------

Adjustable parameters

Flushing pressure	0,5...1,5 bar (to remove air from the test piece)
Start pressure	0,5...1 bar
Pressure increase per time	2...15 bar/s
Calm time	min. 0,5 s
Test pressure	30...36 bar (Maximum pressure limitation for non-destructive testing)
Test period	1...3 s

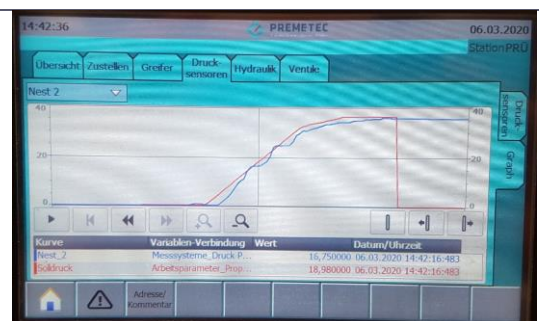
Cycle time	15 s
-------------------	------

Measurement data processing and machine control

Hardware	SPS SIMATIC S7
Visualization	Touch panel
Storage	csv file
Export	individual QS systems

Optional

Measurement data evaluation with	PC-Application
----------------------------------	----------------



Electrical characteristic data	IEC	UL / CSA
Power feed	400 V / 50 Hz / 16 A	480Y/277 Vac / 60 Hz / 16 A
Control voltage	24 V DC	24 V DC
Connected load	4 kVA	4 kVA

Compressed air connection	6 bar
----------------------------------	-------

Sound pressure level

Maximum sound pressure level	<83 dB(A)
Time average sound pressure level	<75 dB(A)

Dimensions and weight

Width	1,6 m
Depth	2,7 m
Height	2,2 m
Weight	3.100 kg