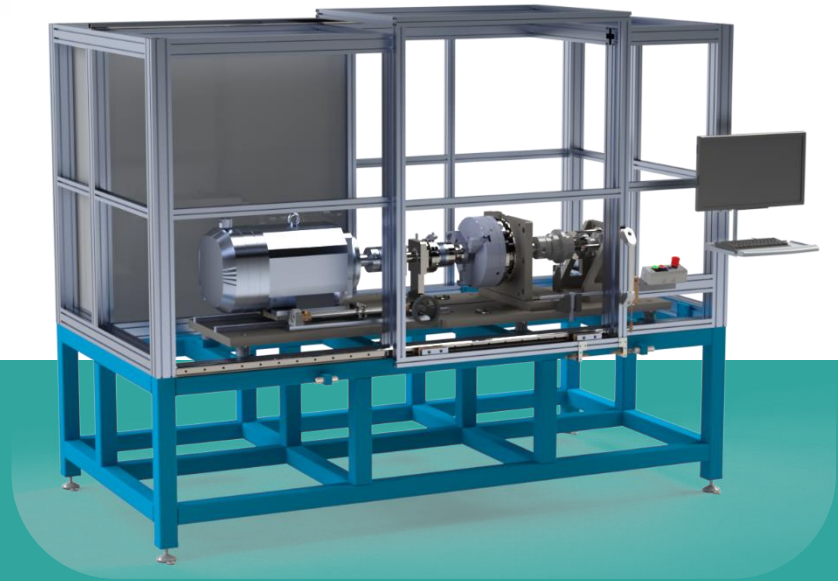
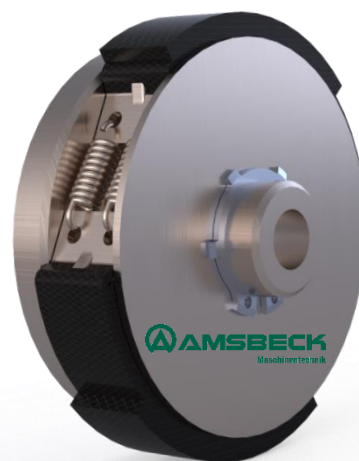


## Test Bench Centrifugal Clutch



- Clutch test bench for lab tests for determination of significant parameters of centrifugal clutches and centrifugal brakes
- Test sequence can be programmed freely:
  - Determination of the activation speed
  - Performance measurement in brake operation (dynamic friction values)
  - Performance measurement in clutch operation (break-free torque)
  - Determination of time-variable speed-torque curves
- Measuring principle:
  - The centrifugal clutch is installed in the adapter (for different  $\varnothing$  test piece types) and clamped between the drive motor and the measuring section
  - Control of the drive motor and evaluation of the measurement results of the torque sensor in the measuring section
  - Temperature measurement of the test piece housing
  - Documentation of the measurement result
- Optional: Extraction system for resulting gases from stress on the friction lining
  - Handling with crane for heavy test pieces



## Technical Data

Test piece	Centrifugal clutches, centrifugal brakes
Measurement data	Activation speed Torque Break-free torque Speed Temperature Slip time
Adjustable parameters	Speed Time parameters Start-up counter-moment
Measuring data processing and machine control	
Hardware	Industrial panel PC
Operating system	Windows
Measuring data software	Software clutch test bench®
Visualisation	Monitor
Storage, archiving	csv file, in database on system PC
Export	individual QA systems, SQL database
Electrical characteristic data	IEC
Supply	400 V / 50 Hz / 125 A
Control voltage	24 V DC
Connected load	35 kVA
Compressed air connection	Not required
Airborne noise emission	
Max. sound pressure level	<92 dB(A)
Eq. permanent noise level	<75 dB(A)
Machine dimensions	
Width	2.9 m
Depth	1.8 m
Height	2.2 m
Weight	2,000 kg

